

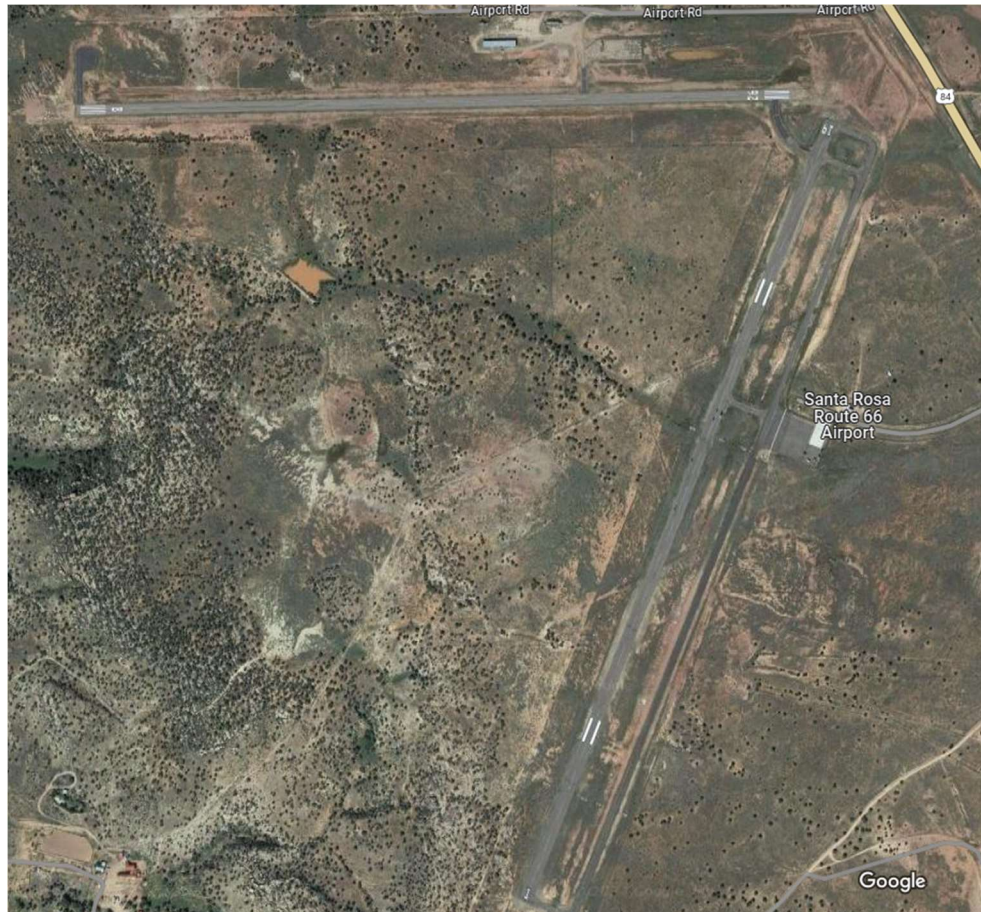


Santa Rosa Route 66 Airport

The Santa Rosa Route 66 Airport is a general aviation airfield serving Santa Rosa and Guadalupe County, New Mexico. It is located two miles east of Santa Rosa. The airport opened in the late 1960's and now has two paved runways that can handle most types of light aircraft including small jets. The original runway, running east to west, is part of the famous U. S. Route 66 highway before Interstate 40 was constructed. The second runway, running northeast to southwest, was constructed in 1996. Originally called the Santa Rosa Municipal Airport, the airfield was renamed to Route 66 at Santa Rosa Airport in 2000 and to the current Santa Rosa Route 66 Airport in the early 2010's. The FAA code was changed from Q58 to I58 in 2005 and to the current code of SXU in the late 2000's.



Santa Rosa Route 66 Municipal Airport grounds.

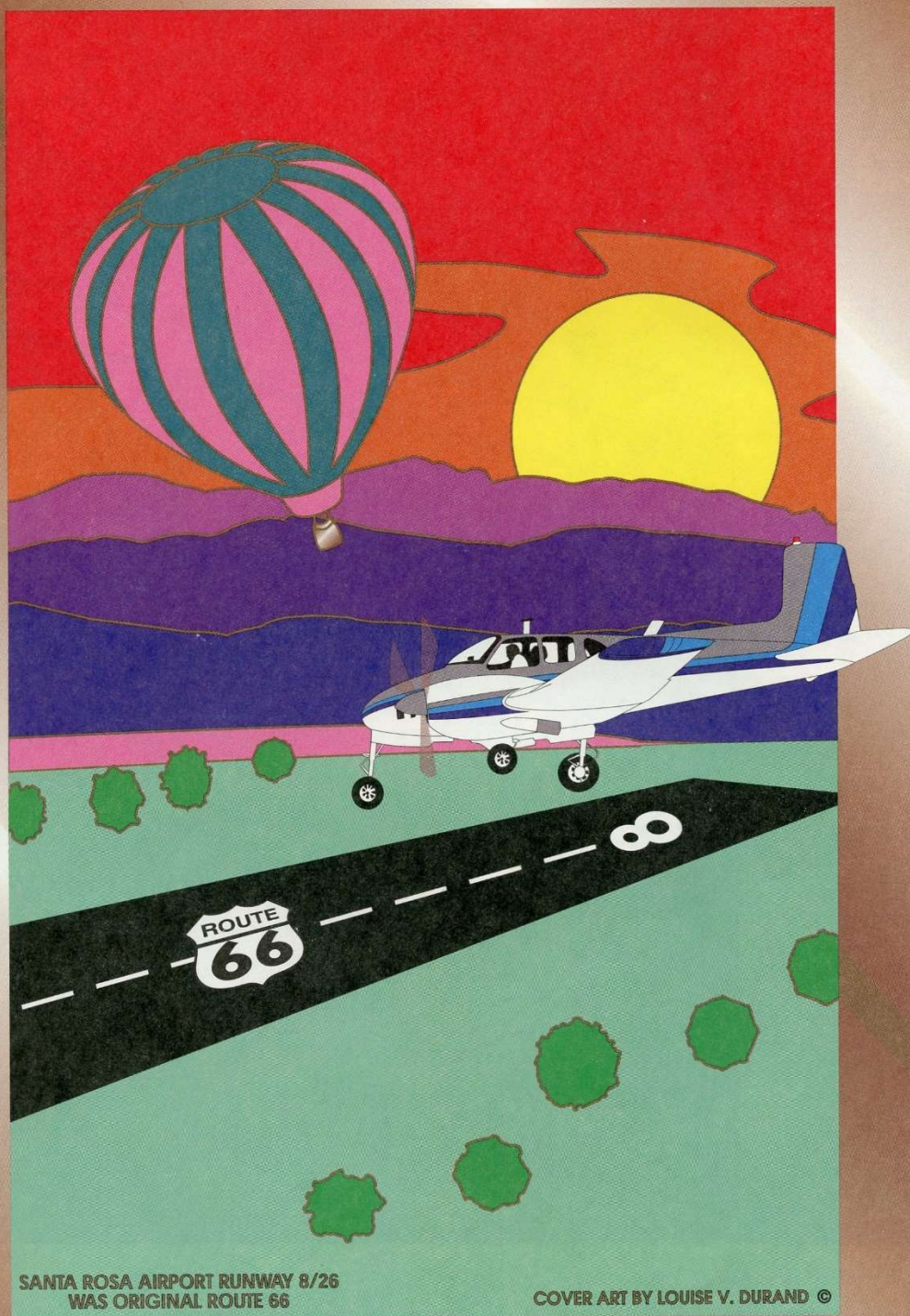


Aerial view of the Santa Rosa airport.



Runway 8-26 at the Santa Rosa airport that was once part of old U.S. highway 66.

NEW
MEXICO
LAND
OF
ENCHANTMENT



AERONAUTICAL CHART 2001-2002

Cover of the 2001-2002 New Mexico Aeronautical Chart by Louise V. Durand depicting the Santa Rosa airport.